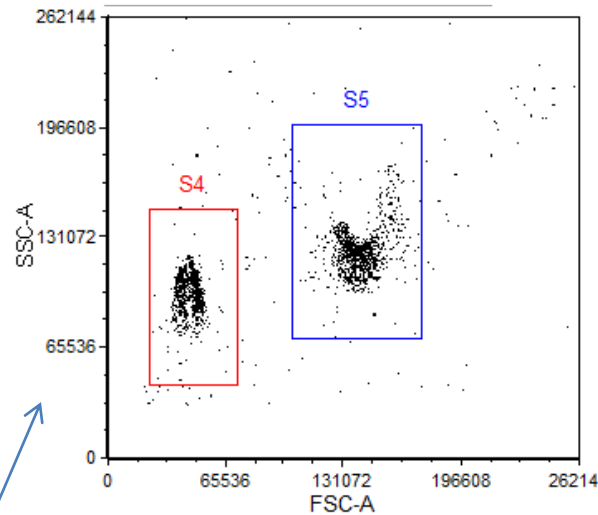
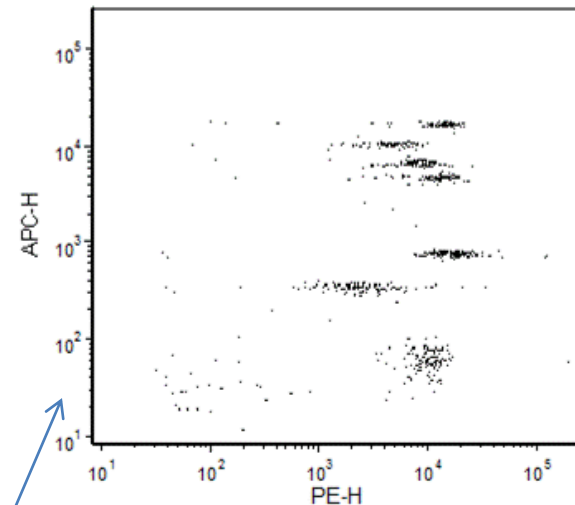


LSRII setting recommendation for AimPlex assays



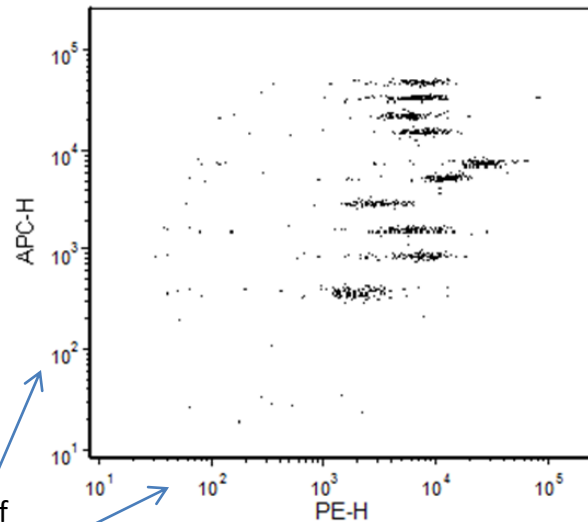
Linear scales of
FSC and SSC

Gated on S4



Log scales of
APC-H and PE-H

Gated on S5



Log scales of
APC-H and PE-H

Settings that can be used as a start for further adjustment according to each individual LSRII.

FSC: Voltage 643 LIN

SSC: Voltage 236 LIN

PE: Voltage 401 LOG

APC: Voltage 319 LOG

No color compensation is needed.

“Threshold” should be set on either FSC or SSC to remove debris on the FSC/SSC dot plot (If Threshold is set on FSC, 20,000 can be set. Further adjustment may be needed according to individual LSR II.)

Both Areas and Heights of PE and APC should be collected.